

# Meadows Font Collector™ XTension™ v2.03

Font Collector is one of the Meadows suite of utility XTensions to QuarkXPress. This XTension allows you to collect all of the fonts which are used in the current QuarkXPress document and gives you a nice report when its finished. All screen fonts are copied into a single suitcase file and all PostScript outline fonts are copied into the same folder as the screen font file.

Version 2.03 of Font Collector also allows you to download font information with EPS files that are created using QuarkXPress. In addition, the latest version of Font Collector has been designed to run as a native QuarkXPress v4.0 XTension.

## System Requirements

Macintosh System software version 8.x and QuarkXPress v3.32 or later (including QuarkXPress v4.0).

## Installation

To install the XTension, simply drag the XTension into the **XTension** folder which is located in the same folder where your QuarkXPress application is loaded. Then, launch QuarkXPress. The XTension will load automatically.

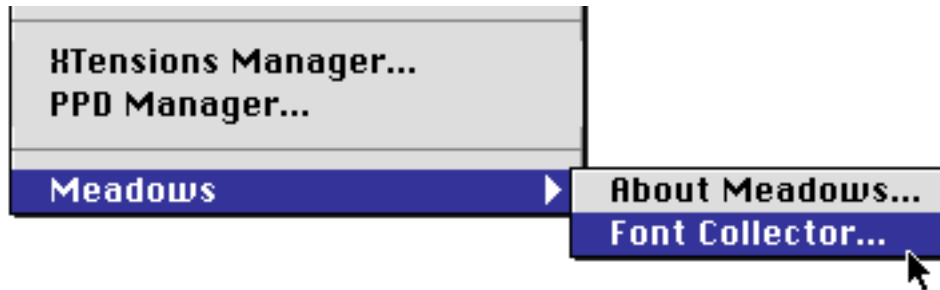
Note: There are separate XTensions for QuarkXPress v3.32 and QuarkXPress v4.0x. Please install only one of the following XTensions, depending on the version of QuarkXPress you are using:

- |                                  |  |
|----------------------------------|--|
| <b>MIS Font Collector™ (3.x)</b> | Copy this XTension if you are running QuarkXPress v3.32.           |
| <b>MIS Font Collector™ (4.x)</b> | Copy this XTension if you are running QuarkXPress v4.04 or higher. |

## Using the XTension

## Collecting Fonts for Output

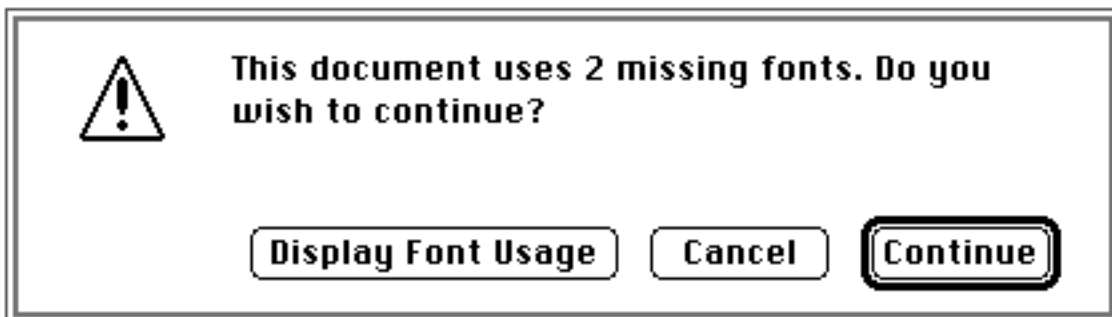
After launching QuarkXPress, there will be a new menu item added to the Utilities menu (see below):



To begin a font collection, open a QuarkXPress document and select **Font Collector...** from under the Utilities/Meadows menu.

At this point the Font Collector™ XTension will scan your document for font usage. It also scans all EPS graphics for font usage so it may take several seconds before you are prompted to continue.

If you are missing any fonts, you will be prompted with the following dialog:



Click **Continue** to continue with the collection anyway.

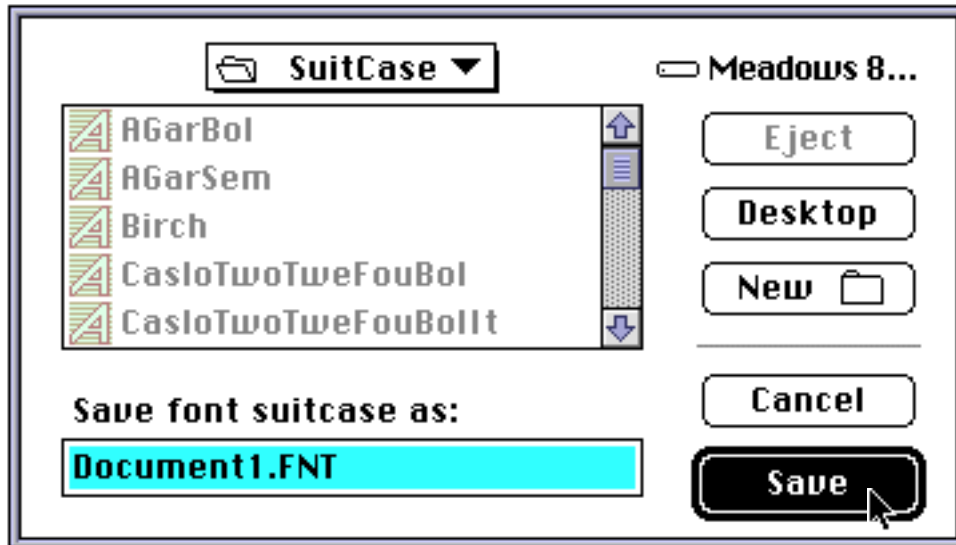
Click **Cancel** if you wish to cancel the font collection.

Click **Display Font Usage** to bring up Quark's Font Usage dialog. This will allow you to substitute for the missing fonts if you wish.

Note: The above dialog will differ if you are missing only EPS fonts (that is, fonts which are used in EPS graphics).

## Select a Suitcase Name

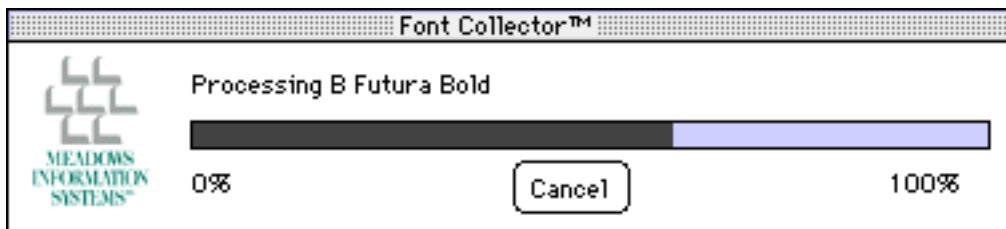
If you clicked Continue (or if you are not missing any fonts) you will next be prompted to select a name and location for your font suitcase file. The font suitcase will contain all of the screen font information for all fonts used in the document. The PostScript outline font information will be copied into the same folder where you store your suitcase file.



Navigate to the folder where you want to store the suitcase file and click **Save** when you are ready to continue.

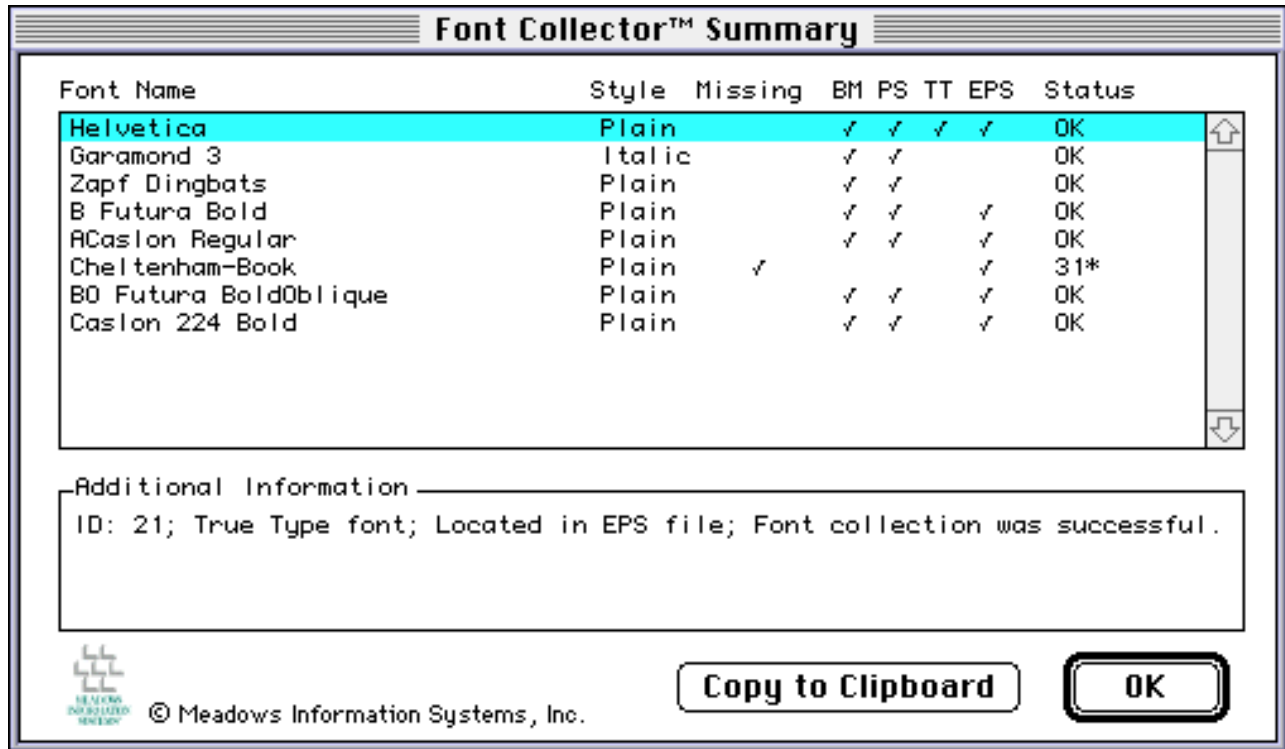
## Collecting the Fonts

After clicking Save the Font Collector™ XTension will proceed to gather up all of the required fonts for the current document. You should see a progress bar as the fonts are being collected. You may click on the **Cancel** button at any time to cancel the collection process.



## Check the Report

When complete, you will be presented with a detailed report. The report dialog is shown below:



Each column of the report is described below:

**Font Name:** This column contains the name of the font which was collected.

**Style:** The style of the font.

**Missing:** A check mark in this column indicates that the font was missing from your system and could not be collected.

**BM:** A check mark in this column indicates that the bitmap (screen font) was successfully collected.

**PS:** A check mark in this column indicates that the PostScript outline font (or 'nfnt' resource in the case of True Type fonts) was successfully

collected.

**TT:** A check mark in this column indicates that the font is a True Type font.

**EPS:** A check mark in this column indicates that the font was used in an EPS graphic. Note that the font may also be used elsewhere in the document text as well.

**Status:** This column will contain a status code. Each status code is described below:

**OK:** Font collection was successful.

**22:** Could not find a FOND resource for this font.

**23:** The PostScript outline font could not be located.

**24:** The name of the PostScript outline font file could not be determined.

**25:** The FOND resource for this font is not valid.

**26:** The FOND resource for this font belongs to the System resource file.

**27:** The FOND resource for this font is ROM-based and cannot be copied.

**28:** A problem was encountered retrieving FCB info for the FOND resource.

**29:** The location of the FOND resource could not be determined.

**30:** Failure during copy of outline font file. File not found or out of disk space.

**31:** The font is missing from the system.

**32:** The bitmap (FOND and/or NFNT/sfnt) resource was not found.

**33:** Could not locate the PostScript outline font information.

**35:** Searched for a missing outline font but it could not be located.

## Additional Information Box

To get additional information on any font in the list, simply click on the entry. The Additional Information box will be filled with the font ID as well as other helpful information (including a description of any error codes so you don't have to memorize the above list).

## Checking for Errors

A quick scan of the Status column will reveal any errors. If the status is **OK**, you can be sure that the required font information was collected. If not, click on the entry to get additional information about the status condition.

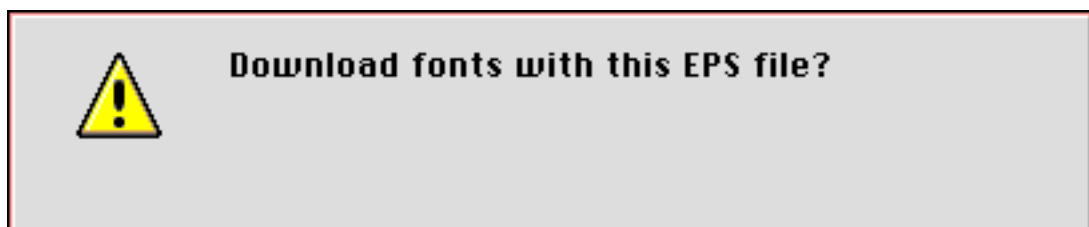
## Copy to Clipboard

Click the Copy to Clipboard button to copy the report text to the clipboard. You may now paste the text into a Quark text box (or a different application) if you wish to print or save the report information.

## Downloading Fonts with EPS Graphics

When you use QuarkXPress to save EPS graphics (that is, when you select "Save Page as EPS..." from under the file menu), Font Collector gives you the option of downloading and embedding fonts in the EPS file as it is saved. This allows you to transmit the file without the need to send the font information separately. Please note that if you are not interested in this option, you may turn the feature off. See the Preferences section below for details.

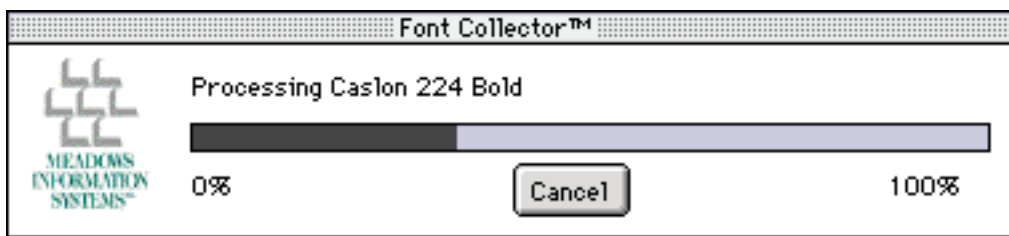
To download fonts at the time you create and EPS graphic, just select "Save Page as EPS..." as you normally would. You will be prompted to download fonts with the EPS graphic:



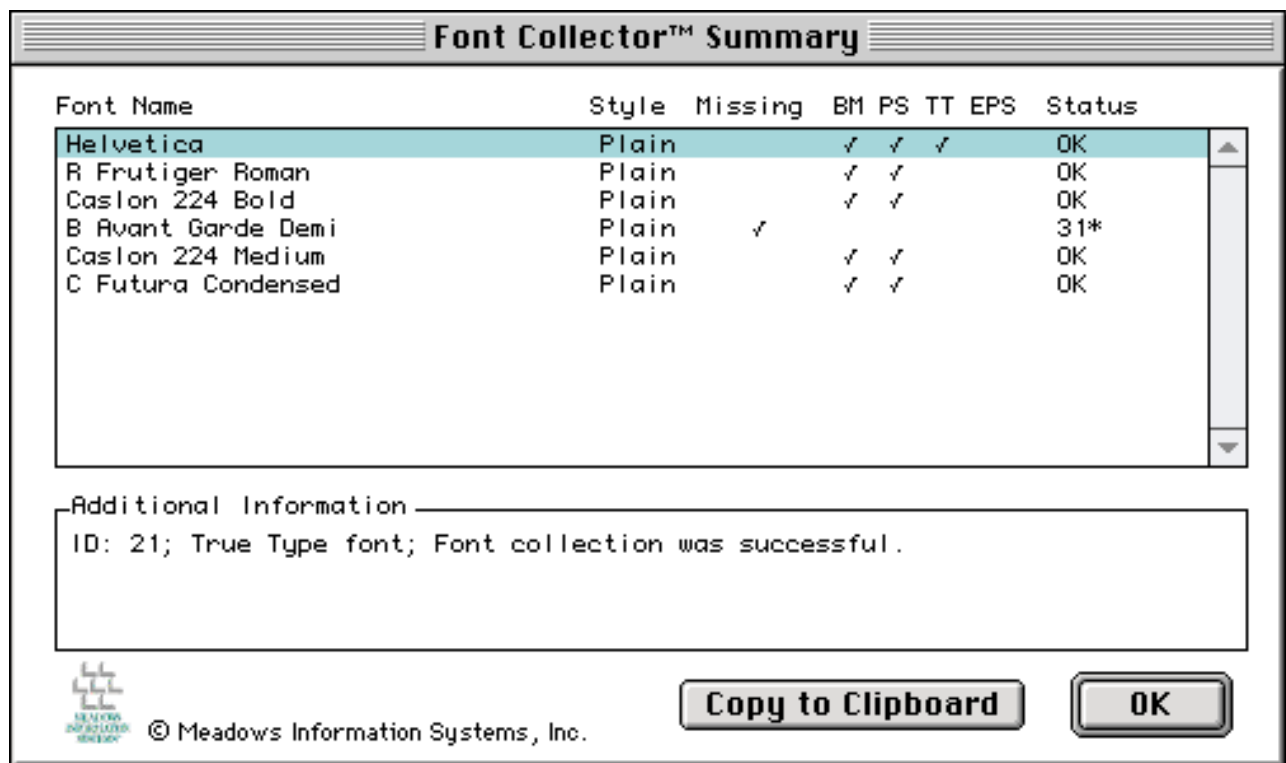


Click Yes to instruct Font Collector to download font information, or click No to exclude fonts from the EPS file.

Next you will be presented with the Save Page as EPS dialog. Fill in the values as you normally would and save the file. If you elected to include font information, you will see a progress bar appear as fonts are being downloaded:



When complete, you will be presented with a summary dialog which allows you to check for errors. See the previous section for details regarding possible download errors and error codes.



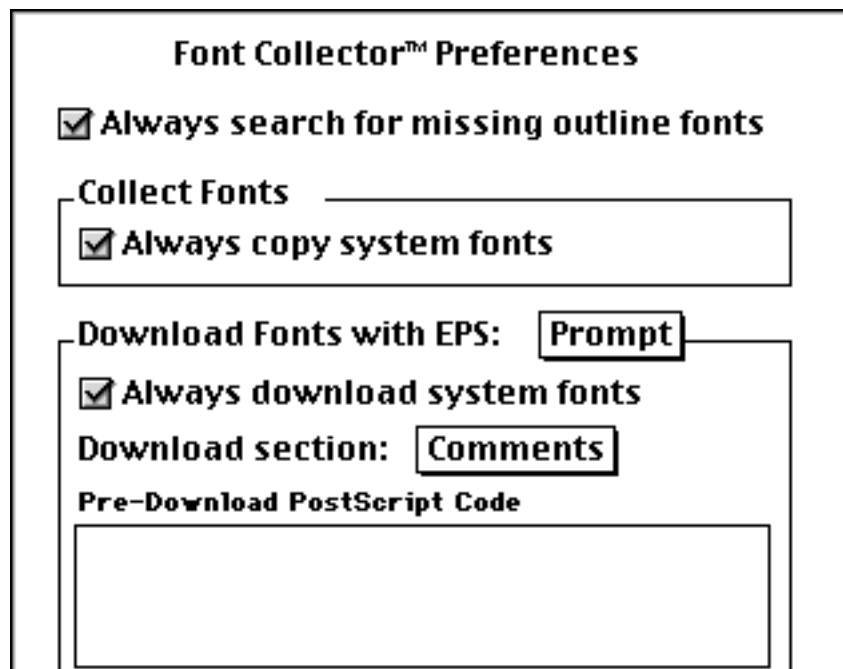
## EPS Download Limitations

Font Collector has the following limitations with respect to downloading fonts in EPS files:

- True Type fonts are currently not supported for EPS downloading. If a True Type font is used in a document, it will be flagged in the report as an error when Font Collector tries to download it.
- All of the fonts used in a particular document are downloaded with the EPS file, not just those that are being used on the particular page being saved.
- For DCS and other multiple-file EPS formats, font information is downloaded into all of the individual files.

## Preferences

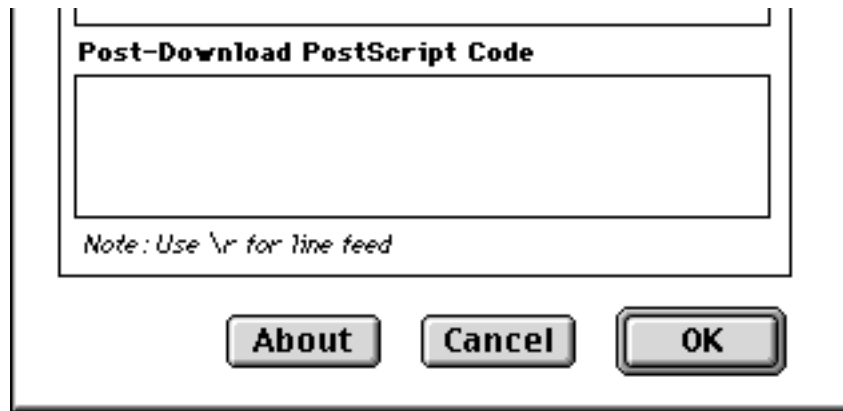
To access the Font Collector preferences, select **Edit/Preferences/Meadows Font Collector...** The preferences dialog is shown below:



The screenshot shows the 'Font Collector™ Preferences' dialog box. It contains several sections with checkboxes and buttons:

- Always search for missing outline fonts**: checked.
- Collect Fonts**: a text input field.
- Always copy system fonts**: checked.
- Download Fonts with EPS:** a button labeled 'Prompt'.
- Always download system fonts**: checked.
- Download section:** a button labeled 'Comments'.
- Pre-Download PostScript Code**: a large empty text area.





**Always search for missing outline fonts:** If this option is checked, Font Collector will attempt to locate missing outline fonts by searching in each folder which contains an open suitcase (screen font) file. Note that this option may increase the time necessary to perform the collection. In any event, missing outline fonts will be reported in the summary dialog at the end of the collection/download.

**Always copy system fonts:** Check this option to include "system" fonts in the collection (Helvetica, Chicago, Geneva, etc.).

**Download Fonts with EPS:** Use the popup menu to select the appropriate EPS downloading option. You have three options for downloading font information with EPS graphics:

**Off:** Never download fonts.

**Prompt:** Ask the user if they want to download fonts (default option).

**Always:** Always download fonts when saving EPS files.

**Always download system fonts:** Check this option to include "system" fonts in the download (Helvetica, Chicago, Geneva, etc.).

**Download section:** Use this popup menu to specify which "section" of the EPS file you want to receive the downloaded font information. You may choose the Comments, Procedures, or Initialization section. Each selection places the font information in a different location within the EPS file. The default selection for this item is the Comments section.

**Pre-Download PostScript Code:** Allows you to enter PostScript data

which will be downloaded **just before** the font information. Use \r to indicate where you would like a line feed code to be inserted.

**Post-Download PostScript Code:** Allows you to enter PostScript data which will be downloaded **just after** the font information has been downloaded. Use \r to indicate where you would like a line feed code to be inserted.

## Order Additional Copies

The first copy of Font Collector is FREE! Additional copies are available in packs of 5, 10, 25, 50, and site license. If you wish to order additional copies of this or any of our other XTension products, please give us a call at any of the numbers listed below. You may also contact us via e-mail. Thanks for your interest in our XTension products.

Meadows Information Systems, Inc.  
1305 Remington Road, Suite G  
Schaumburg, IL 60173

Toll-Free (U.S. & Canada Only) 1-888-XTENSION  
(847) 882-8202  
(FAX) 882-9494  
E-Mail: [sales@meadowsinfo.com](mailto:sales@meadowsinfo.com)  
Web: <http://www.meadowsinfo.com>

VISA/AMEX/MC accepted.  
Thank you!



## Legal Stuff

### Copyright Information

Copyright © 1997-99 Meadows Information Systems, Inc. All rights reserved worldwide. Portions © 1988 - 1999 Quark, Inc. All rights reserved. Quark, QuarkXPress and QuarkXTensions are registered trademarks of Quark,

Inc. All other product names used herein are for identification purposes only and may be trademarks of their respective companies.

## **Quark Disclaimer**

Quark, Inc. makes no warranties, either express or implied, regarding the computer XTensions and software products listed in this catalog, including but not limited to merchantability or fitness for any particular purpose. Quark, Inc. disclaims all warranties including, but not limited to the warranties of the distributors, retailers and developer of the software listed in this catalog. Without limiting the foregoing, in no event shall Quark, Inc. be liable for any special, indirect, incidental, or consequential damages in any way relating to or arising out of the use of the enclosed software. Quark, Inc.'s liability shall in no event exceed fifty dollars. The exclusion of implied warranties and/or the exclusion or limitation of incidental or consequential damages is not allowed in some areas, so these exclusions may not apply to you.

## **License Agreement**

### **MEADOWS INFORMATION SYSTEMS, INC. SOFTWARE LICENSE AGREEMENT**

**PLEASE READ CAREFULLY BEFORE USING THIS SOFTWARE!**

**THIS AGREEMENT CONSTITUTES A LEGAL AGREEMENT BETWEEN YOU, THE END USER, AND MEADOWS INFORMATION SYSTEMS, INC. ("MEADOWS"). USING THE ENCLOSED SOFTWARE INDICATES YOUR ACCEPTANCE OF THESE TERMS AND CONDITIONS. IF YOU DO NOT AGREE WITH THEM, PLEASE RETURN THE SOFTWARE PROMPTLY.**

- 1. Grant of License.** This computer program (the "Software") is licensed, not sold, to you by Meadows Information Systems, Inc. for use under the terms of this Software License Agreement. Meadows grants to you the right to use this copy of the Software. You may not use the Software simultaneously on more than one computer unless otherwise agreed to in writing by Meadows.
- 2. Demo Copies.** All Meadows demonstration software is provided for demonstration purposes only. Use of any Meadows demonstration software for any other purpose is considered a violation of this Software License Agreement.
- 3. Copy Restrictions; Ownership of Software.** The Software and accompanying written materials are copyrighted. You own the media on which the Software is recorded; Meadows retains title to the Software, including all copies thereof, regardless of form or media, and to all copyrights therein. You may either (a) transfer the Software to a single hard disk and retain the original Software for backup purposes or (b) make one copy of the Software solely for backup or archival purposes.

4. Transfer Restrictions. This software license is not transferrable under any conditions. This restriction on transferability also applies to any FREE single-user version of our Utility XTension products. This Software contains trade secrets of Meadows, and to protect them, you may not modify, adapt, translate, rent, lease, loan, resell, distribute, merge, reverse engineer, decompile, or disassemble the Software or any part thereof or create any derivative works based on the Software or any part thereof.

5. Termination. This license is effective until terminated. This license will terminate immediately without notice from Meadows if you fail to comply with any of its provisions. Upon termination, you agree to destroy or purge all copies of the Software and accompanying written materials.

6. LIMITED WARRANTY. As its only warranty under this Software License Agreement, Meadows warrants the media on which the Software is provided to be free from defects in materials under normal use for a period of 90 days from the date of delivery to you as evidenced by your purchase receipt. EXCEPT AS EXPRESSLY WARRANTED HEREIN, THE SOFTWARE IS PROVIDED "AS IS" WITHOUT WARRANTY OF ANY KIND, INCLUDING, BUT NOT LIMITED TO, THE IMPLIED WARRANTIES OF MERCHANTABILITY AND FITNESS FOR A PARTICULAR PURPOSE. THE ENTIRE RISK AS TO THE QUALITY AND PERFORMANCE OF THE SOFTWARE IS WITH YOU. MEADOWS DOES NOT WARRANT THAT THE FUNCTIONS CONTAINED IN THE SOFTWARE WILL MEET YOUR REQUIREMENTS OR THAT THE OPERATION OF THE SOFTWARE WILL AT ALL TIMES BE UNINTERRUPTED OR ERROR FREE OR THAT ANY SOFTWARE DEFECTS WILL BE CORRECTED. THE ABOVE EXCLUSION MAY NOT APPLY TO YOU BECAUSE SOME STATES DO NOT ALLOW THE EXCLUSION OF IMPLIED WARRANTIES. THIS WARRANTY GIVES YOU SPECIFIC, LIMITED RIGHTS. YOU MAY HAVE OTHER RIGHTS, WHICH VARY FROM STATE TO STATE.

7. LIMITATION OF LIABILITY. The entire liability of Meadows to you and your sole remedy under this Software License Agreement is, at the option of Meadows, either (a) return of payment as evidenced by a copy of your purchase receipt or (b) replacement of media not meeting the Limited Warranty. IN NO EVENT WILL MEADOWS OR ITS OFFICERS, EMPLOYEES, OR AFFILIATES BE LIABLE TO YOU FOR ANY DIRECT, INDIRECT, SPECIAL, INCIDENTAL, OR CONSEQUENTIAL DAMAGES OF ANY NATURE WHATSOEVER, INCLUDING, WITHOUT LIMITATION, ANY SUCH DAMAGES RESULTING FROM INTERRUPTION OF BUSINESS OR LOSS OF PROFITS, REVENUES, DATA, OR USE, OR EXEMPLARY OR PUNITIVE DAMAGES ARISING OUT OF OR IN CONNECTION WITH THE USE OF OR THE INABILITY TO USE THE SOFTWARE OR ACCOMPANYING WRITTEN MATERIALS, INCLUDING FAILURE OF WARRANTY, EVEN IF MEADOWS HAS BEEN ADVISED OF THE POSSIBILITY OF SUCH DAMAGES AND NOTWITHSTANDING THE FORM (E.G., CONTRACT, TORT, OR OTHERWISE) IN WHICH ANY LEGAL OR EQUITABLE ACTION MAY BE BROUGHT AGAINST MEADOWS. THE ABOVE LIMITATION OR EXCLUSION MAY NOT APPLY TO YOU BECAUSE SOME STATES DO NOT ALLOW THE EXCLUSION OR LIMITATION OF LIABILITY FOR CONSEQUENTIAL OR INCIDENTAL DAMAGES.

8. Governing Law. This Agreement is governed by the laws of the State of Wisconsin.

9. U.S. Government Restricted Rights. This section applies to all acquisitions of the Software by or for the U.S. government. By accepting delivery of the Software, the government hereby agrees that the Software qualifies as "commercial computer software" and "commercial computer software documentation" as those terms are used in the acquisition regulations DFAR Section 227.7202 and FAR section 12.212, as applicable, and that the government's use and disclosure of the Software are controlled by the terms of this Software License Agreement to the maximum extent possible. This

Software License Agreement supersedes any contrary terms in any statement of work, contract, or other document. If any terms of this Software License Agreement are unacceptable to the government, Meadows may be contacted at the address set forth in this Software License Agreement. If any terms of this Software License Agreement violate applicable federal law or do not meet the government's actual or minimum needs, the government agrees to return the Software unused for a full refund. Contractor/manufacture is Meadows Information Systems, Inc., 1305 Remington Road, Suite G, Schaumburg, IL 60173.